

Palm Wood Wall + Ceiling Systems,
Architectural Plywood and Flooring



durapalm[®]

Acoustic Systems

Indian Black palm [sugar palm] is an exciting new offering for every designer's palette. Palm is an abundant, natural resource that has great versatility and durability in a wide range of interior applications. The rich textural quality of palm adds depth and character to any designed environment.

▶ ACOUSTIC SYSTEMS	3 - 10
▶ LINEAR PROFILES	11 - 17
▶ PALMTHEORY DESIGNS	18 - 20
▶ TROPICAL MOTIFS	21 - 27
▶ ARCHITECTURAL PLYWOOD	28 - 31
▶ DURAPALM FLOORING	32 - 35



Lake Vembanand, India

Ironwood

Style: Ironwood
Finish: Hand-rubbed Poly, Hand-rubbed oil or unfinished
Construction: Indian Black palm Front + Back, Bamboo core
Size: 3/4" x 47.75" x 95.75" (19mm x 1.213mm x 2.432m)
Fire Rating: Class C

Style: Sandakan
Finish: Hand-rubbed Poly, Hand-rubbed oil or unfinished
Construction: Indian Black Palm front+back, Bamboo core
Size: 3/4" x 47.75" x 95.75" (19mm x 1.213mm x 2.432m)
Fire Rating: Class C

Sandakan



Marrakesh

Style: Marrakesh
Finish: Hand-rubbed poly, Hand-rubbed oil/stain or unfinished
Construction: Indian Black Palm front+back, Bamboo core
Size: 3/4" x 47.75" x 95.75" (19mm x 1213mm x 2.432mm)
Fire Rating: Class C

Style: Tahiti
Finish: Hand-rubbed Poly, Hand-rubbed oil or unfinished
Construction: Indian Black Palm front+back, Bamboo core
Size: 3/4" x 47.75" x 95.75" (19mm x 1.213mm x 2.432m)
Fire Rating: Class C

Tahiti

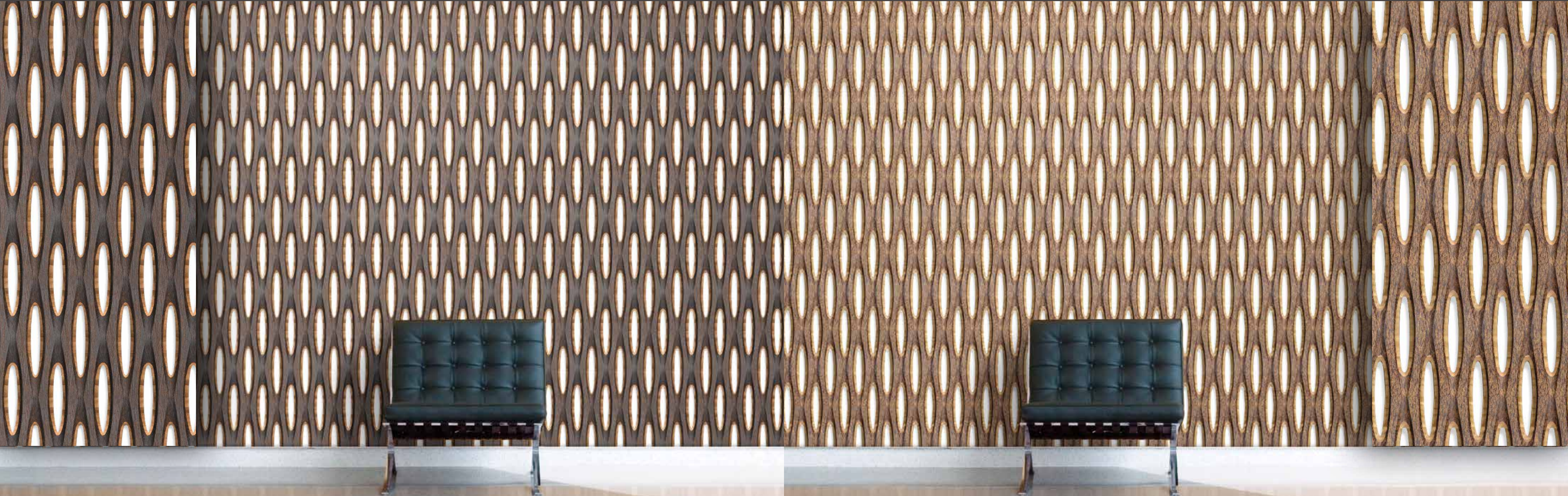


Rajasthan

Style: Rajasthan
Finish: Hand-rubbed poly, Hand-rubbed oil/stain or unfinished
Construction: Indian Black Palm front+back, Bamboo core
Size: 3/4" x 47.75" x 95.75" (19mm x 1213mm x 2.432mm)
Fire Rating: Class C

Style: Sumba
Finish: Hand-rubbed poly, Hand-rubbed oil/stain or unfinished
Construction: Indian Black Palm front+back, Bamboo core
Size: 3/4" x 47.75" x 95.75" (19mm x 1213mm x 2.432mm)
Fire Rating: Class C

Sumba



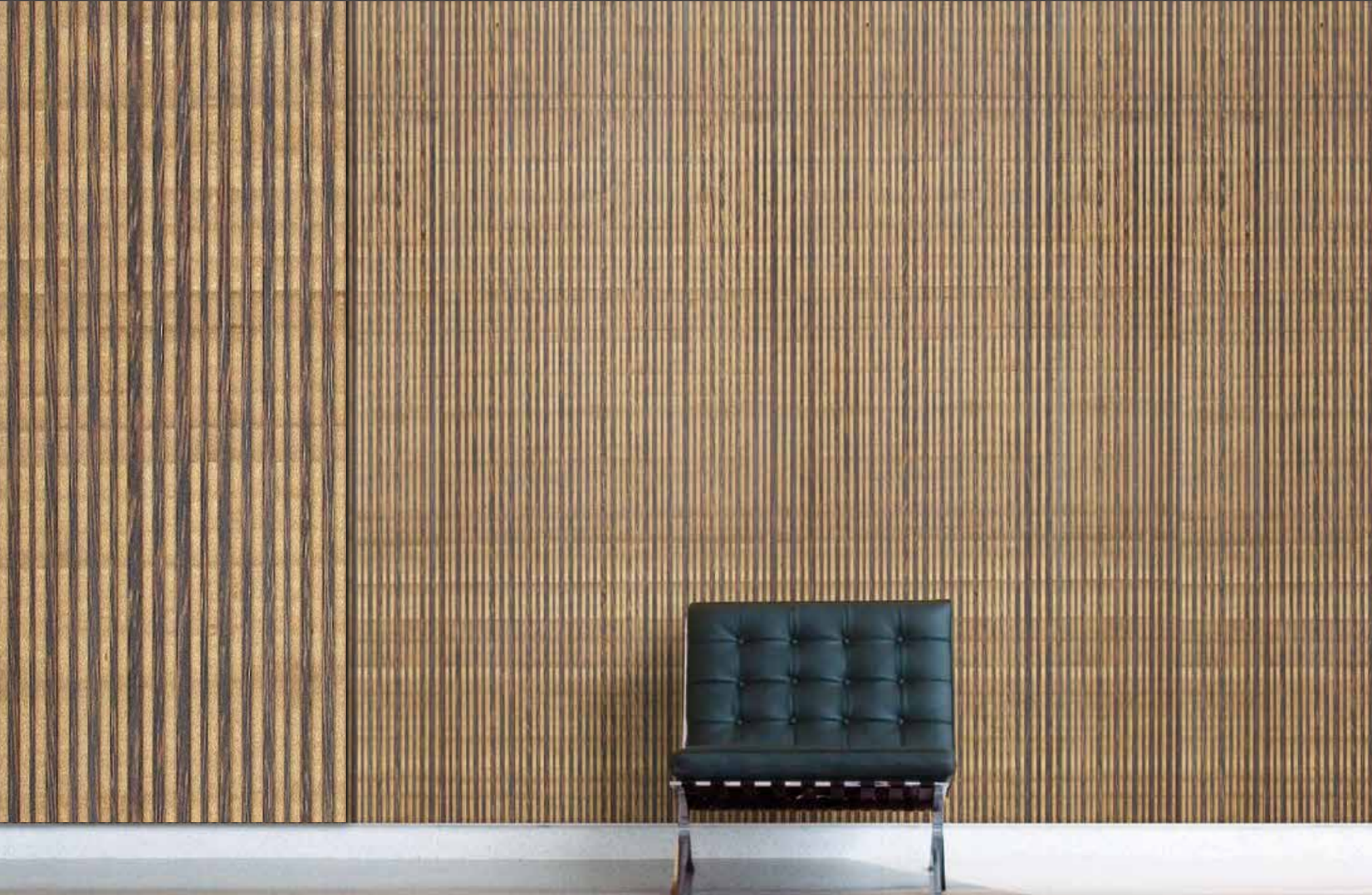
Style: Timor
Finish: Hand-rubbed poly, Hand-rubbed oil/stain or unfinished
Construction: Indian Black Palm front+back, Bamboo core
Size: 3/4" x 47.75" x 95.75" (19mm x 1213mm x 2.432mm)
Fire Rating: Class C



Lake Vembanand, India

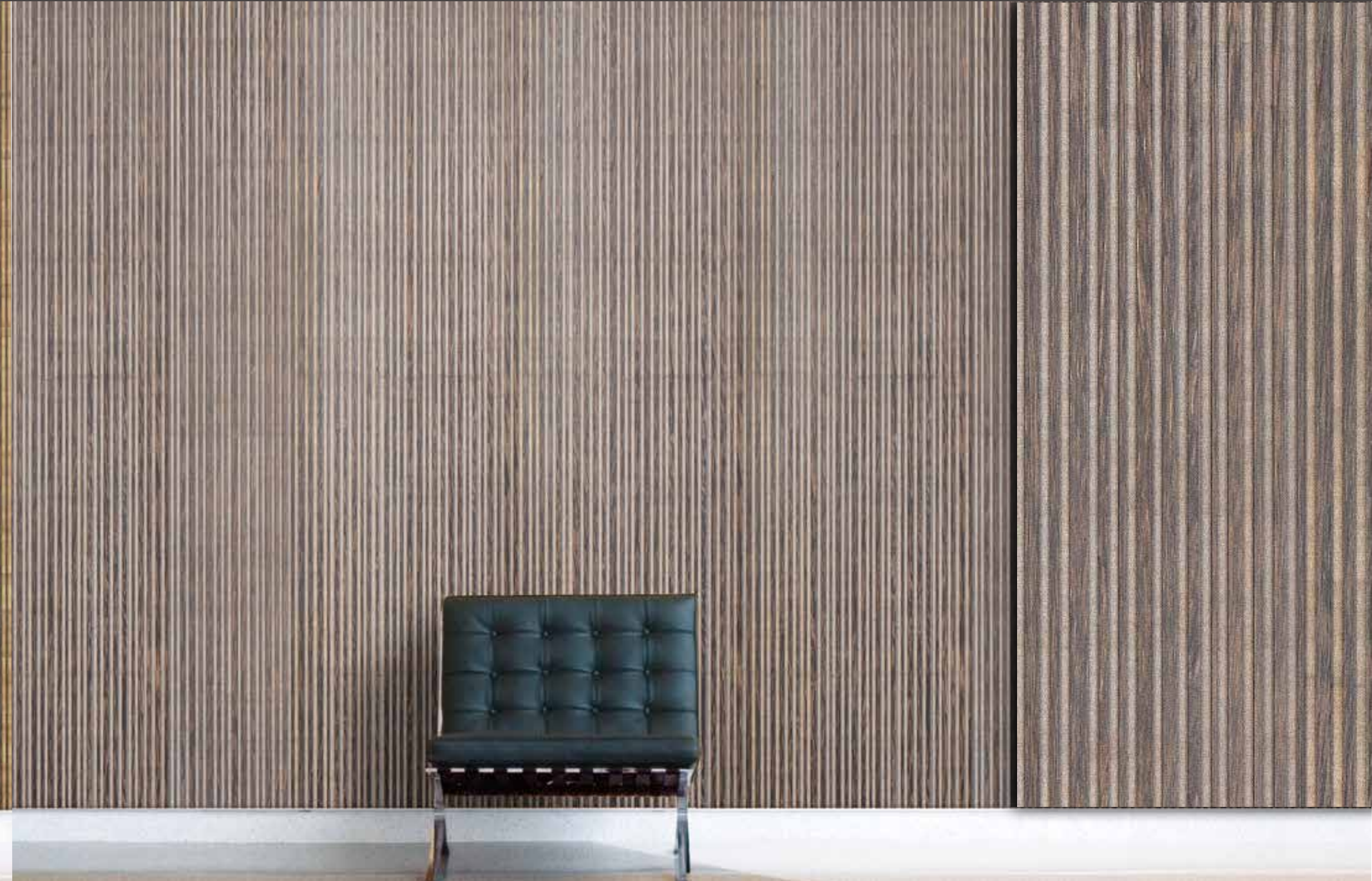
Mandalay

Style: Mandalay
Finish: Hand-rubbed poly, Hand-rubbed oil/stain or unfinished
Construction: Indian Black Palm front+back, Bamboo core
Size: 3/4" x 47.75" x 95.75" (19mm x 1213mm x 2.432mm)
Fire Rating: Class C



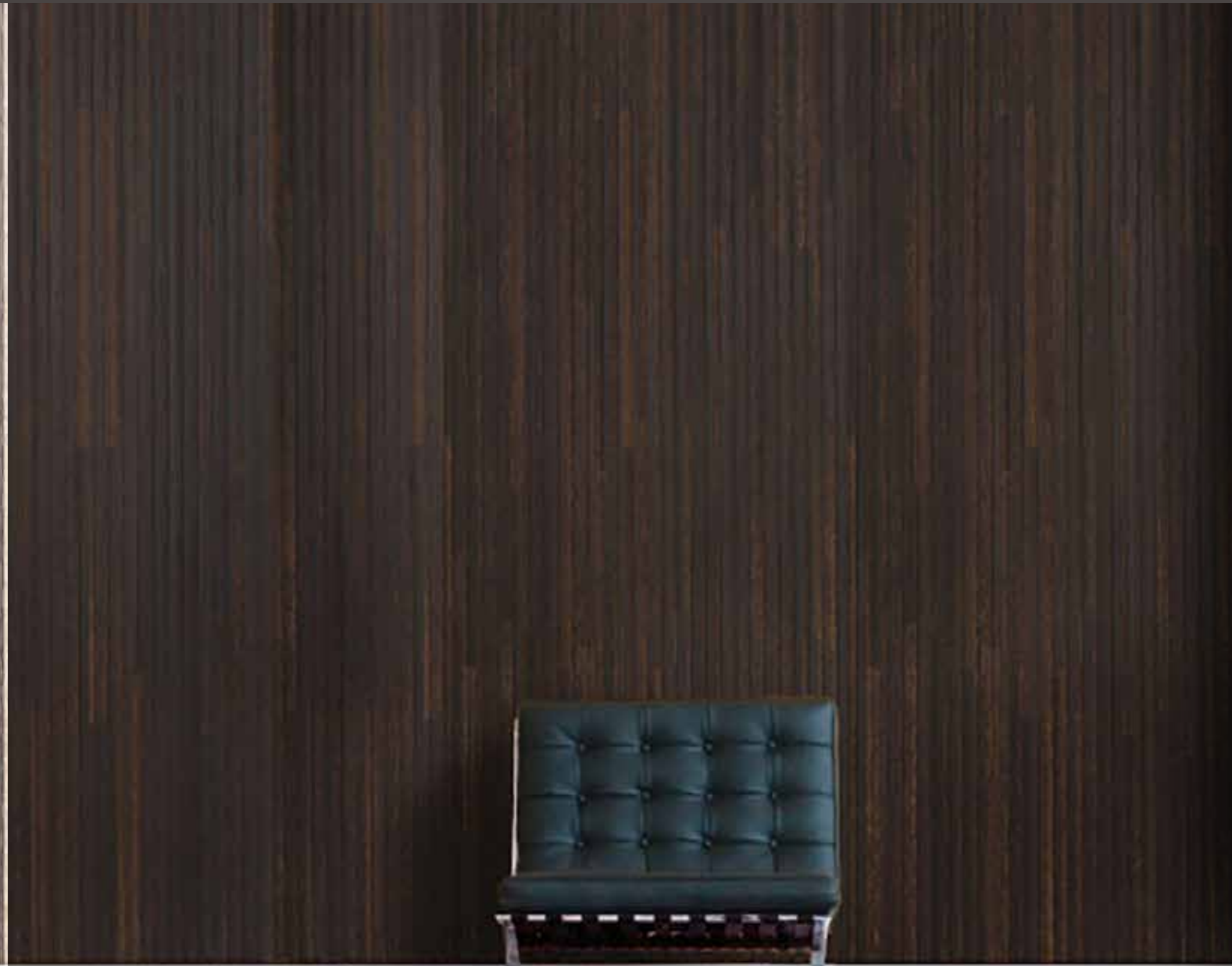
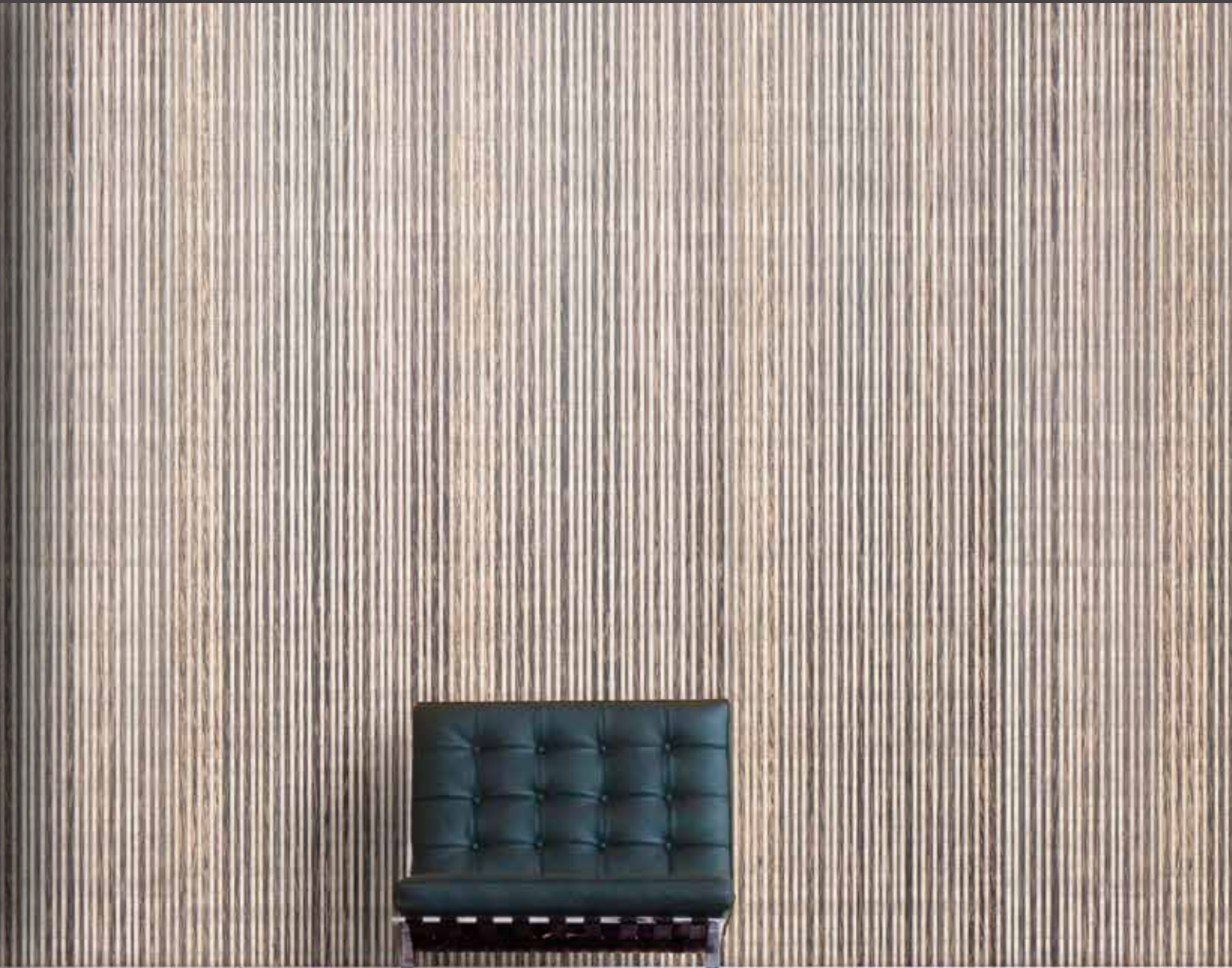
Style: Darjeeling
Finish: Hand-rubbed Poly, Hand-rubbed oil or unfinished
Construction: Indian Black Palm front+back, Bamboo core
Size: 3/4" x 47.75" x 95.75" (19mm x 1.213mm x 2.432m)
Fire Rating: Class C

Darjeeling



Style: Kashmir
Finish: Hand-rubbed poly, Hand-rubbed oil/stain or unfinished
Construction: Indian Black Palm front+back, Bamboo core
Size: 3/4" x 47.75" x 95.75" (19mm x 1213mm x 2.432mm)
Fire Rating: Class C

Style: Simla
Finish: Hand-rubbed Poly, Hand-rubbed oil or unfinished
Construction: Indian Black Palm front+back, Bamboo core
Size: 3/4" x 47.75" x 95.75" (19mm x 1.213mm x 2.432m)
Fire Rating: Class C



Style: Colonial
Finish: Hand-rubbed poly, Hand-rubbed oil/stain or unfinished
Construction: Indian Black Palm front+back, Bamboo core
Size: 3/4" x 47.75" x 95.75" (19mm x 1213mm x 2.432mm)
Fire Rating: Class C

Style: Rangoon
Finish: Hand-rubbed Poly, Hand-rubbed oil or unfinished
Construction: Indian Black Palm front+back, Bamboo core
Size: 3/4" x 47.75" x 95.75" (19mm x 1.213mm x 2.432m)
Fire Rating: Class C



Style: ABR12
Finish: Hand-rubbed poly urethane, Hand rubbed oil or unfinished
Construction: Indian Black palm Face+Back, 100% Bamboo core
Size: 3/4" x 48"x 96" (19mm x 1.22mm x 2.438m)
Geometry: Isosceles Triangle



Style: ABR12
Finish: Hand-rubbed poly urethane, Hand rubbed oil or unfinished
Construction: Indian Black palm Face+Back, 100% Bamboo core
Size: 3/4" x 48"x 96" (19mm x 1.22mm x 2.438m)
Geometry: Isosceles Triangle



Style: ALT1
Finish: Hand-rubbed poly urethane, Hand rubbed oil or unfinished
Construction: Indian Black palm Face+Back, 100% Bamboo core
Size: 3/4" x 48"x 96" (19mm x 1.22m x 2.438m)
Geometry: Isosceles Triangle

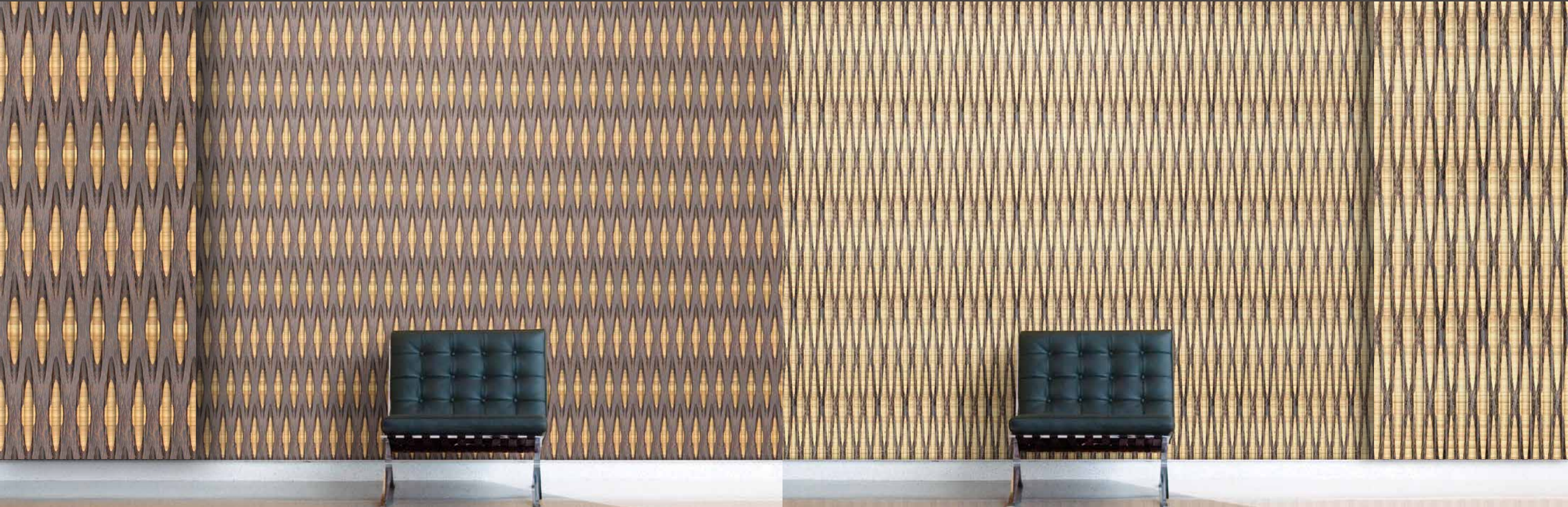
PalmTheory™ is a series of configurable 4 x 8 panels used to achieve patterns through the manipulation of the material's uniquely graphic grain pattern. Neither a grass or a tree, Palm produces a unique and surprisingly strong directional grain and rich coloration.



Saronde, North Sulawesi, Indonesia

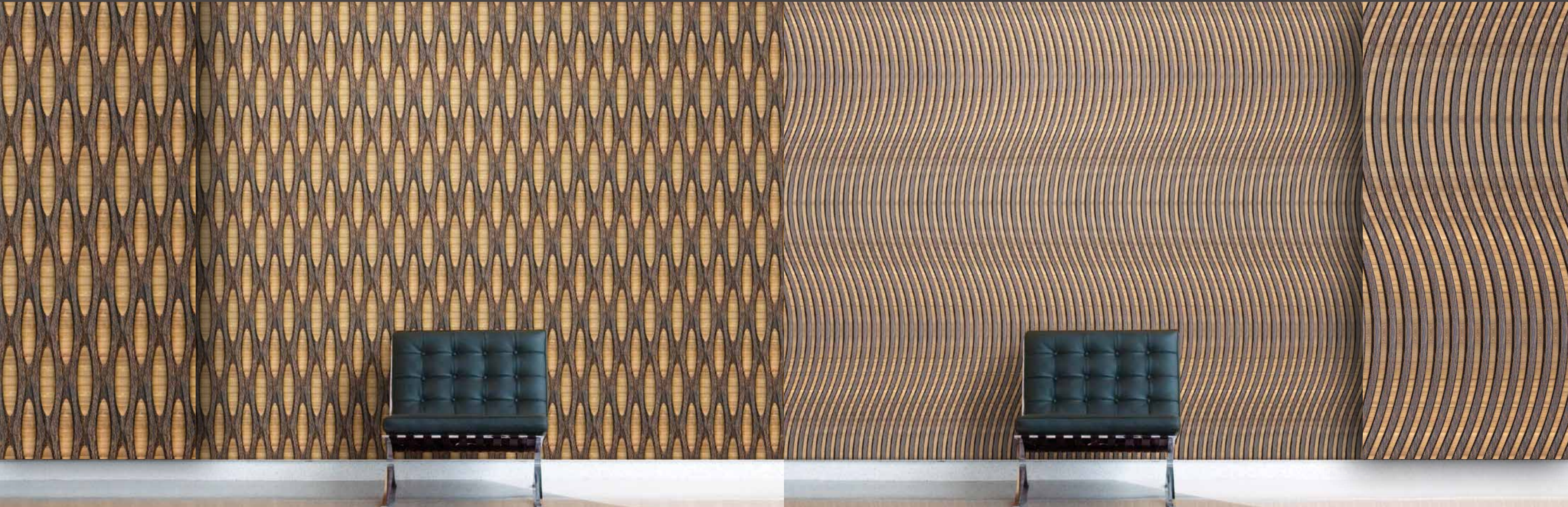
Style: Tonga
Finish: Hand-rubbed Poly, Handy-rubbed oil/stain or unfinished
Construction: Indian Black palm Front + Back, Bamboo core
Size: 0.75" x 47.75" x 95.75" (19mmx1.213m x 2.432m)
Fire Rating: Class C

Style: Manali
Finish: Hand-rubbed Poly, Handy-rubbed oil/stain or unfinished
Construction: Indian Black palm Front + Back, Bamboo core
Size: 0.75" x 47.75" x 95.75" (19mmx1.213m x 2.432m)
Fire Rating: Class C



Style: Agra
Finish: Hand-rubbed Poly, Handy-rubbed oil/stain or unfinished
Construction: Indian Black palm Front + Back, Bamboo core
Size: 0.75" x 47.75" x 95.75" (19mmx1.213m x 2.432m)
Fire Rating: Class C

Style: Goa
Finish: Hand-rubbed Poly, Handy-rubbed oil/stain or unfinished
Construction: Indian Black palm Front + Back, Bamboo core
Size: 0.75" x 47.75" x 95.75" (19mmx1.213m x 2.432m)
Fire Rating: Class C



Style: Malabar
Finish: Hand-rubbed Poly, Hand-rubbed oil/stain or unfinished
Construction: Indian Black palm Front + Back, Bamboo core
Size: 0.75" x 47.75" x 95.75" (19mmx1.213m x 2.432m)
Fire Rating: Class C

Bamboo Room - Three Dots & A Dash, Chicago, ILL - Style: Malabar



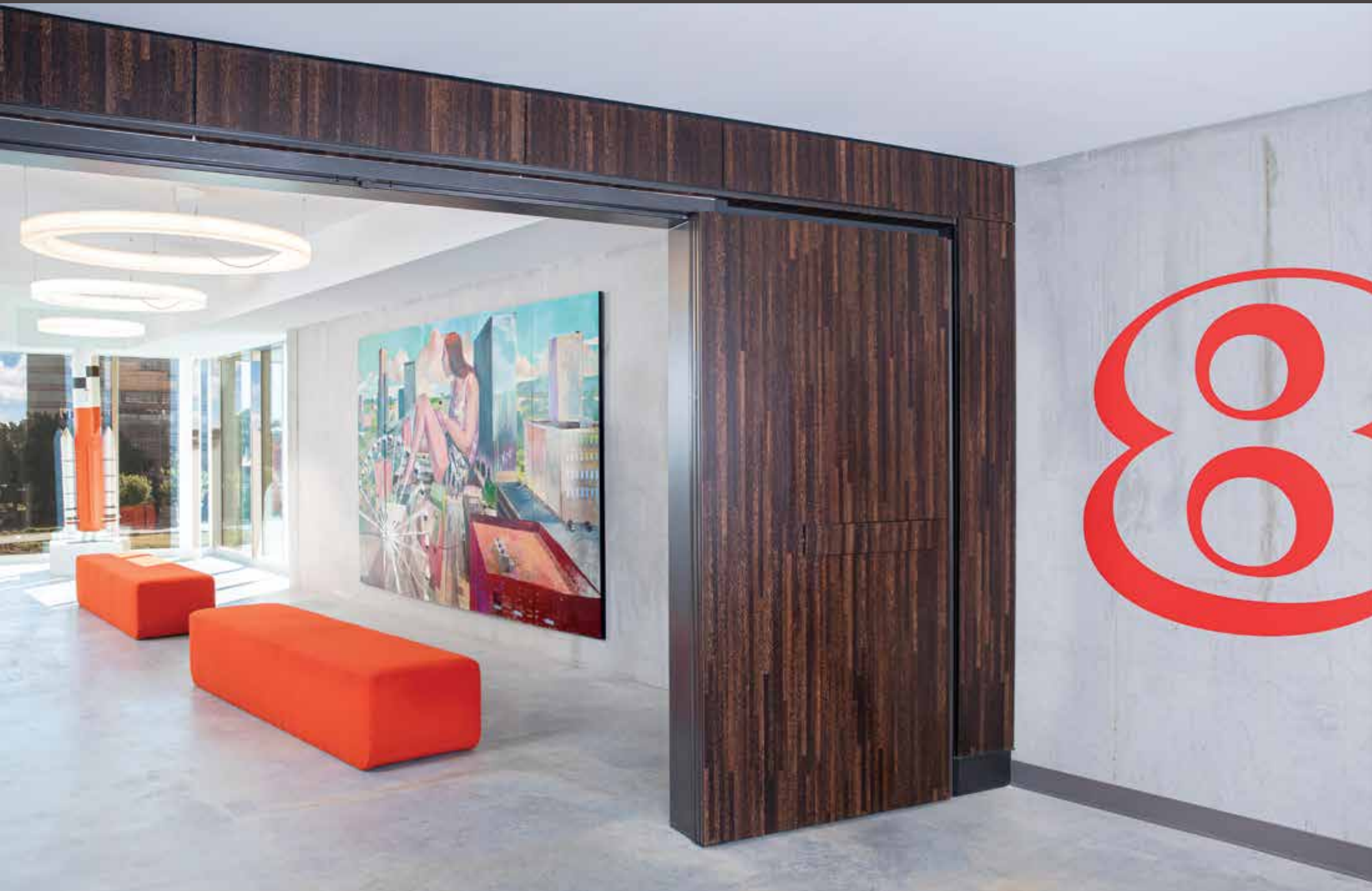
Sugar Standard

Style: Sugar Standard
Finish: Unfinished
Construction: Indian Black palm Front + Back, Bamboo core
Size: 3/4" x 48" x 96", 3/4" x 48" x 72"
(19mm x 1.22m x 2.438m or 1.829m)



Style: Sugar Deco
Finish: Unfinished
Construction: Indian Black palm Front + Back, Bamboo core
Size: 3/4" x 48" x 96" (19mm x 1.22m x 2.438m)

Sugar Deco



Sugar Linear

Style: Sugar Linear
Finish: Unfinished
Construction: Indian Black palm Front + Back, Bamboo core
Size: 3/4" x 48" x 96", 3/4" x 48" x 72"
(19mm x 1.22m x 2.438m or 1.829m)

Plywoods/Lumber



Sugar
Standard



Sugar
Linear



Sugar Palm
Veneer &
Lumber



Sugar
Deco



Sugar Deco

Style: Sugar Deco
Finish: Prefinished
Construction: Indian Black palm top, Bamboo base
Size: 9/16" x 5" x 72", 14mm x 127mm x 1.83



Style: Brushed Tusk
Finish: Prefinished
Construction: Indian Black palm top, Bamboo base
Size: 9/16" x 3.5" x random", 14mm x 90mm x random

Brushed Tusk



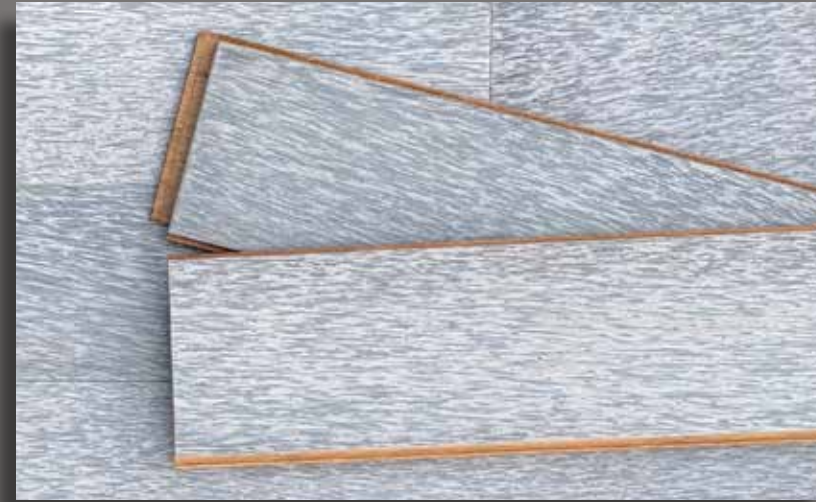
Durapalm Flooring

Finish: Lightly brushed texture, durable + scratch resistant, satin UV finish
Construction: Bamboo or eucalyptus plywood base
Profile: Click lock or standard T&G
Size: 9/16" or 1/2" x 3.5" x random lengths (14mm or 12mm x 90mm x random lengths)

Hardness: : Bamboo base 3200lbs/sqft - 1455kg/m2 average
Plywood base 1350lbs/sqft - 613kg/m2 average
Emissions: Bamboo base: CDPH/EHLB / Cal. Sec. 01350 Passed
Eucalyptus plywood base: Meets or surpasses ULEF standards under CARB II

Durapalm Flooring

Seashell



Whittlewood



Reef



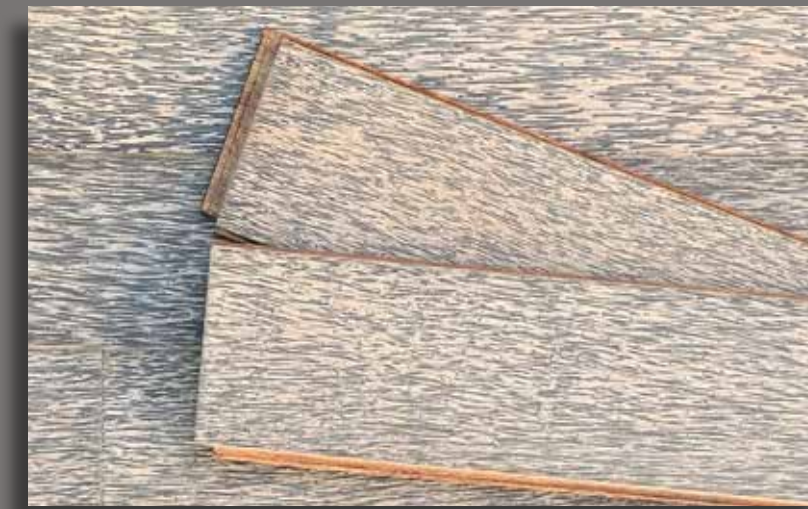
Tropical Dusk



Island Starscape



Black Sand



Brushed Bark



Lava Stone

durapalm[®]

SMITH & FONG COMPANY

394 Bel Marin Keys #6

Novato, CA 94949

durapalm.com

info@durapalm.com

866.835.9859

